



CARESCAPE™ ONE Monitor

The FlexAcuity™ Solution



Ready for a flexible future?



CARESCAPE ONE — All in One

One unified monitoring solution for every patient need, at every point of care.

Care that can flex with changing patient needs

A solution for hospital's everyday challenge

Patient needs can change in an instant. Especially as patient population age increases and cases become more complex, you need a patient monitoring solution that can flex with changing patient needs. GE HealthCare provides one unified monitoring solution for every patient need, at every point of care, so you will always have the right insights when and where you need them.

Patients today are transferred often for diagnostics and therapies. Yet each transport poses potential risk.¹ Patients en route need the same monitoring vigilance as at bedside.

CARESCAPE ONE monitor — the moving heart of the ecosystem

CARESCAPE™ ONE monitor makes transport of patients and information as easy as “unplug and go”. It provides a large display for viewing patient status, capturing vital signs without interruption and quickly adapts to your care needs. It eliminates the need of multiple devices and versions, helping to minimize capital and service costs.



1) Adverse events during intrahospital transport of critically ill patients: incidence and risk factors, Parmentier-Decrucq et al. Annals of Intensive Care 2013, 3:10⁴

Simplified workflow — just unplug and go!

Focus on the patient, not on the device

CARESCAPE ONE adapts to changing care environments with a simple step. Changing measurements for different care areas' standards mean simply adding or removing CARESCAPE Parameter devices.

"This monitor will help me save time in my daily routine, resulting in better focus on my patients."

OR healthcare professional with 13 years of experience

28%

reduction in transport preparation time¹

26%

reduction in total transport time¹

"Great user interface with large screen and intuitive design."

ED transport nurse with 13 years of experience

"I would select this monitor as it is easier to handle. It reduces stress levels and we all know that stress is communicated to the patient."

ICU transport nurse with 3 years experience

¹ Revolutionizing Patient Transport Monitoring, GE Healthcare usability study JB58083XX_JB02775XX. The comparative usability study was conducted in a simulation center whereby intubated OR patients were transported to the ICU by transport nurses.

² The System Usability Scale (SuS): An industry standard metric used for measuring perceived usability and ease of use.



70.4

CARESCAPE ONE outperforms the gold standard usability reference and is easier to use than a comparator device²

64.9
Comparator device²

Durable technology for staying on the move



iF Design Award
winner 2019

Typical 5 h
battery run time³

5h

Large 7" screen²

Display with 180°
rotation



Protective
frame

- 1 m drop test on any axis
- Handle for easy operation
- IP44 for the monitor



Standardized
Parameter devices

Strain relief tested for¹

- 25.000 cycles
- 180 degrees angles
- 0,53 kg ball drop

Replaceable parts such as dual
IBP connector

IP47



Standardized medical
USB connectors

- Up to 8 connectors
- In-built NIBP
- Tested for 20.000 cycles

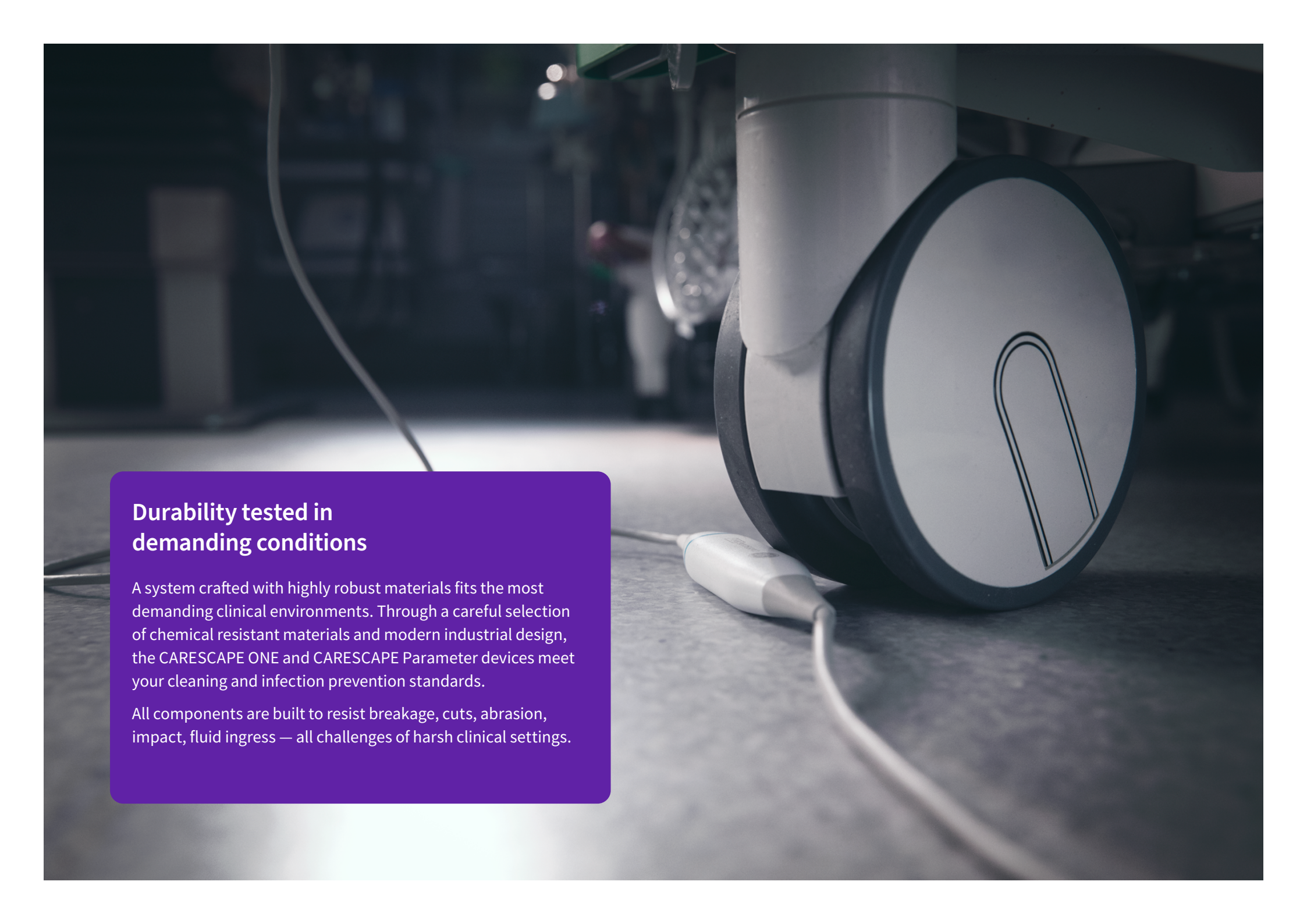


1) Specifications apply to GE HealthCare devices only.

2) Up to 4 waveform and numeric fields, and up to 7 parameter windows simultaneously on one screen, additional waveforms on two consecutive screens.

3) Fully charged with 12 lead ECG, TruSignal SpO2, 2 X Temp, 2 X InvP, Auto NIBP at 15 min interval, maximum volume and brightness.

* Masimo PVI and SpHb, and INVOS rSO₂ measurements are available only when the CARESCAPE ONE monitor is used in acquisition mode with a CARESCAPE Canvas or Bx50 monitor equipped with corresponding license.



Durability tested in demanding conditions

A system crafted with highly robust materials fits the most demanding clinical environments. Through a careful selection of chemical resistant materials and modern industrial design, the CARESCAPE ONE and CARESCAPE Parameter devices meet your cleaning and infection prevention standards.

All components are built to resist breakage, cuts, abrasion, impact, fluid ingress — all challenges of harsh clinical settings.

Investment protection and ease of service

Devoted service and support

Every CARESCAPE ONE and CARESCAPE host monitor comes with a two-year preventive maintenance schedule that may help reduce service costs. Flexible warranty and service offerings are customizable to meet your needs.

Robust data encryption and cyber security ensure protection of patient data.

The Multi-monitor-manager and CARESCAPE Service Interface (CSI) and clinical engineering to manage and troubleshoot your assets saving time and resources.

Standardized platform and USB device connection make CARESCAPE ONE easy to maintain.

The system is designed for serviceability, and clinical engineering is able to easily replace and maintain components on-site.



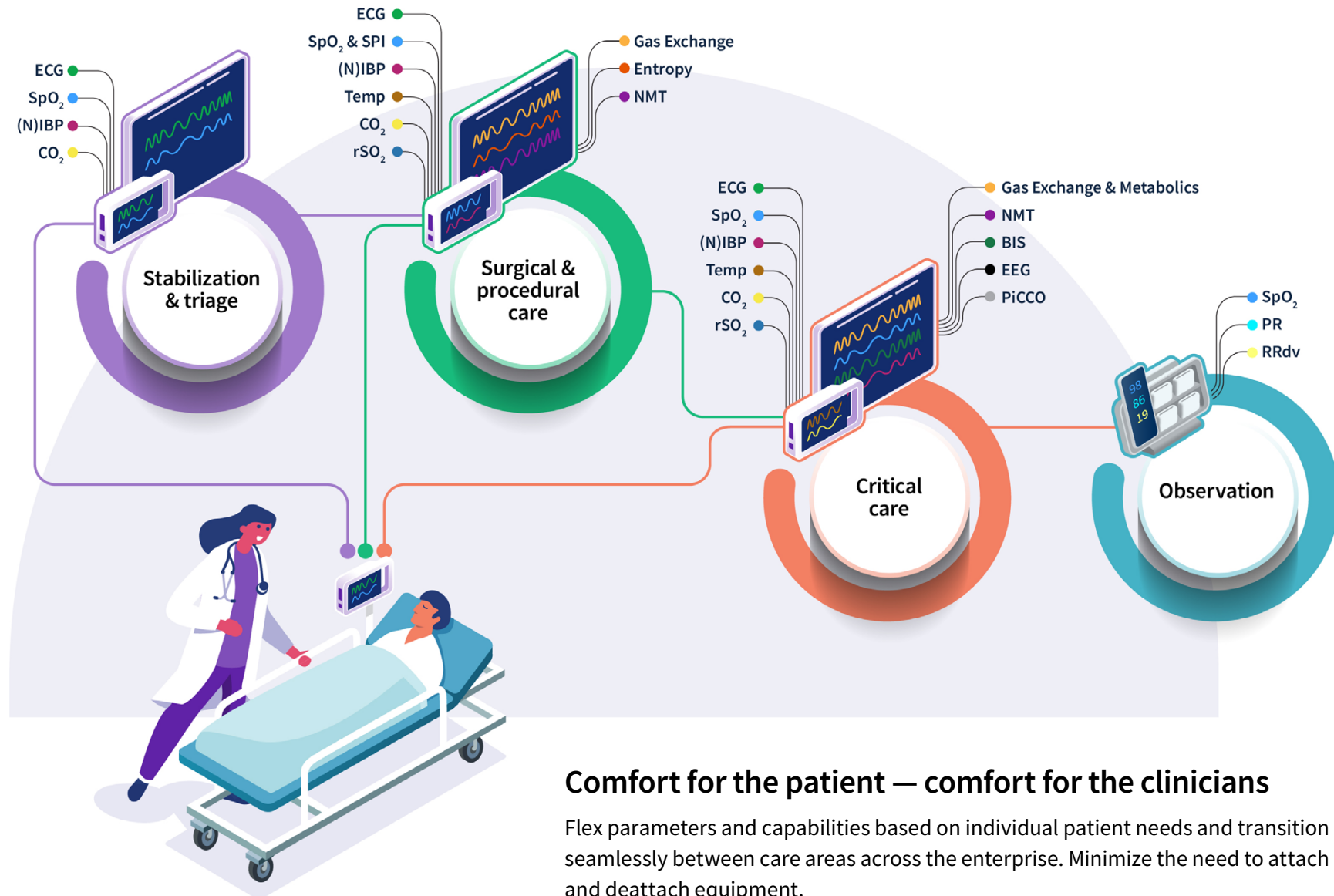
FlexAcuity™ solutions — sustainable lifetime value for years to come

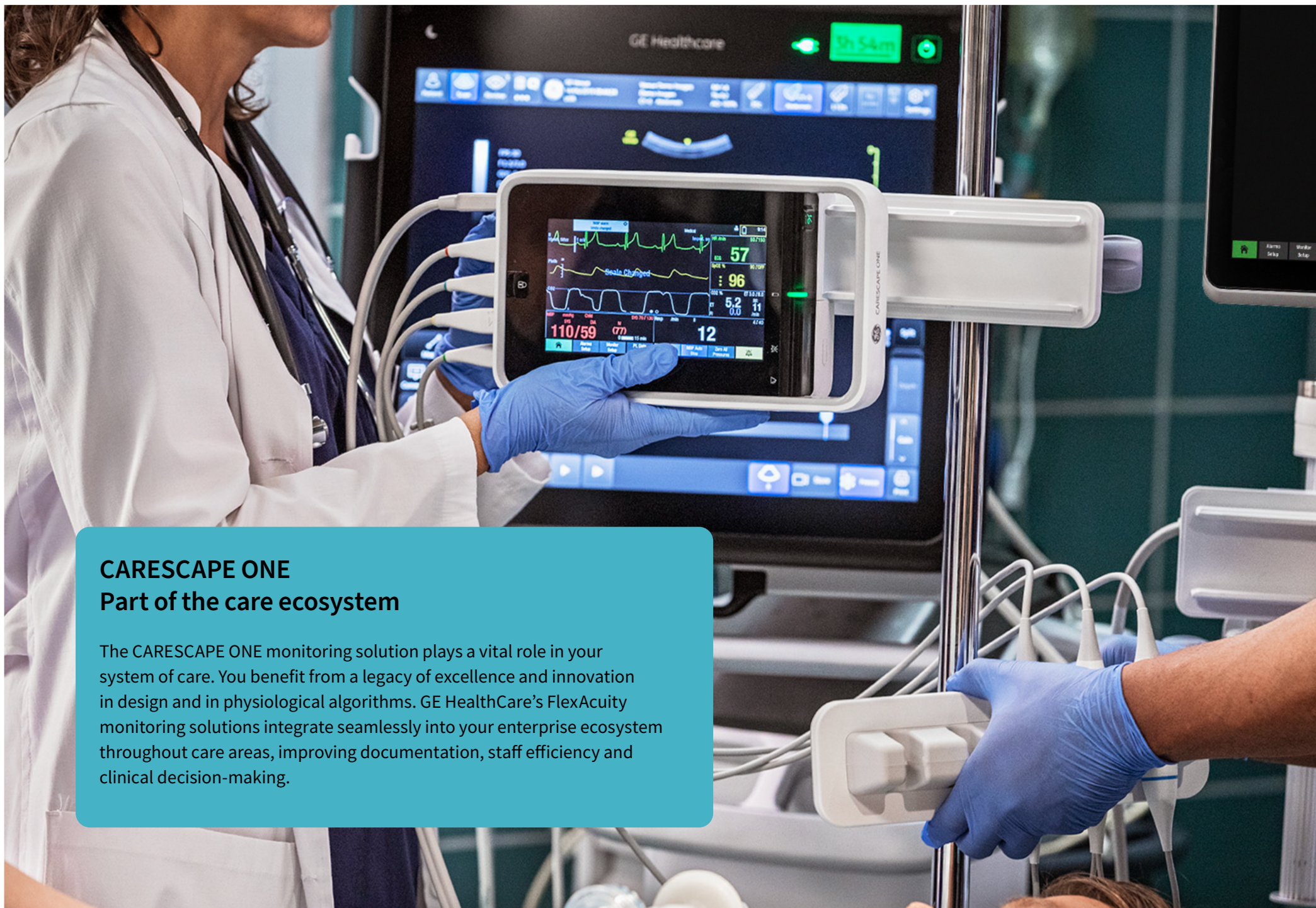
The flexibility you need for entire hospital ecosystem

GE HealthCare's FlexAcuity™ solutions help you to allocate your fleet efficiently to meet the changing needs in healthcare without additional hardware investment.

As hospitals and networks grow and evolve, a monitoring system with the flexibility to do the same, now and into the future, is essential. With a single hardware platform and standardized user experience across devices, our patient monitoring solution ensures you and your care teams can adapt across devices and acuties. Robust remote care management connects the full care pathway.







CARESCAPE ONE

Part of the care ecosystem

The CARESCAPE ONE monitoring solution plays a vital role in your system of care. You benefit from a legacy of excellence and innovation in design and in physiological algorithms. GE HealthCare's FlexAcuity monitoring solutions integrate seamlessly into your enterprise ecosystem throughout care areas, improving documentation, staff efficiency and clinical decision-making.

One unified monitoring solution for every patient need, at every point of care



CARESCAPE Parameters and algorithms

ECG	GE HealthCare EK-Pro, 3-, 5-, 6-, 10-leadset
SpO ₂	GE HealthCare TruSignal™, Nellcor™ OxiMax™ and Masimo rainbow SET® with optional SpHb®, Pi and PVi® *
Pressure	2 x Dual Channel (4 IBP)
Temp	Dual Channel
CO ₂	LoFlo™ from Respirationics; Microstream™ capnography from Medtronic
rSO ₂	INVOS™ technology from Medtronic*
NIBP	Built-in DINAMAP™ SuperSTAT NIBP

Benefit from over 50 years of excellence in patient monitoring

GE HealthCare monitoring solutions are embedded with proven technologies for clinical performance based upon a strong heritage. Rely on the industry's most trusted patient monitoring hardware, software, algorithms, parameters, and consumables to support your clinical decisions.

CARESCAPE ONE
reaches its highest potential
when combined with other
GE HealthCare's CARESCAPE
ecosystem technologies.

gehealthcare.com

CARESCAPE, CARESCAPE Canvas, DINAMAP, FlexAcuity and TruSignal are trademarks of GE HealthCare. GE is a trademark of General Electric Company used under trademark license. Masimo rainbow, Masimo rainbow SET, SpHb and PVi are registered trademarks of Masimo Corporation. INVOS, Microstream, Nellcor and OxiMax are trademarks of a Medtronic Company. Respironics and LoFlo are registered trademarks belonging to Koninklijke Philips Electronics N.V. Dragontrail is a trademark of Asahi Glass Company, Limited. All other trademarks are property of their respective owners. Reproduction in any form is forbidden without prior written permission from GE HealthCare. Nothing in this material should be used to diagnose or treat any disease or condition. Readers must consult a healthcare professional.

Not all products or features are available in all markets. Full product technical specification is available upon request. Contact a GE HealthCare Representative for more information. Please visit www.gehealthcare.com/promotional-locations. Data subject to change. © 2024 GE HealthCare

JB02617XX(3) 3/2024